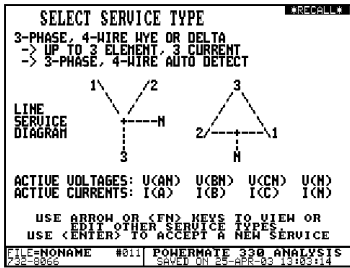


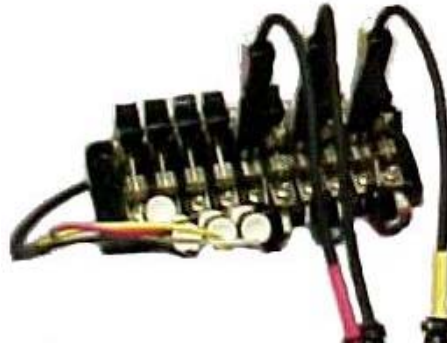
Meter Testing

With Your Powermate 330

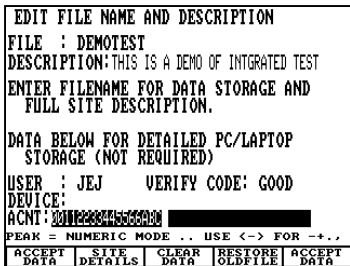
1



Enter Service Type

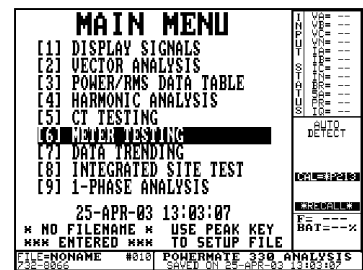


Insert Current Plugs (A, B, C)
Connect Voltage Clips (A, B, C, N)



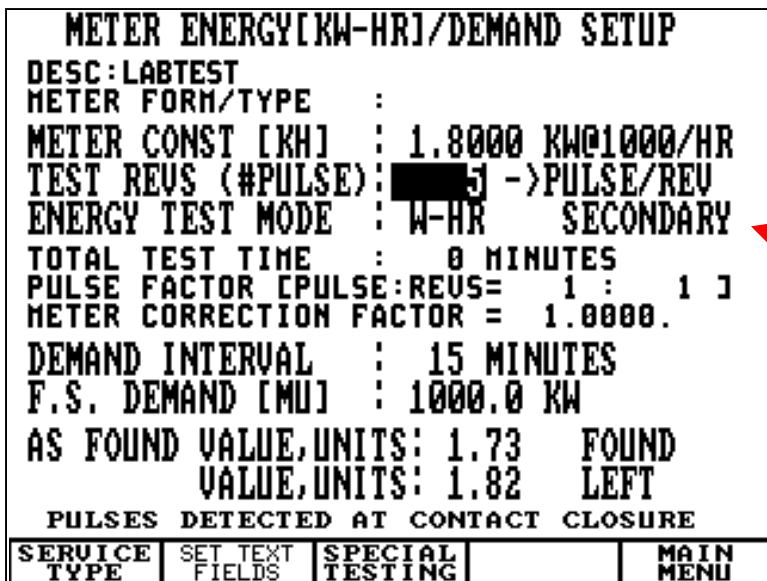
Enter Filename

2



Press #6 for
Meter Testing

3



Time of Test

Demand Values

Meter Kh Value

Pulse/Rev or
Start/Stop

W-HR, VA-HR,
VAR-HR, or Q-HR

Not Used for
Routine Testing



Press ENTER

QUICK TIPS

1. Use "Test Revs" or "Total Test Time." Never use both. Ex. Test Revs: 5, Total Test Time: 0
2. If Solid-State, meter may be required to be put into Test Mode to accept pulses into the 330.
3. When using IR pickup, infrared ports differ on each meter. Take care to sunlight.
4. If using Pushbutton Switch, change "Test Revs" to "Start/Stop" instead of "Pulse/Rev."

4



Connect Meter Pickup
(Labeled "External")

```

! PULSE SETUP ONLY !
BEEPS AND TOGGING ACTIVE TO
ALLOW SENSOR ADJUSTMENT:

PULSE PULSES
WATT-HR
F1 OR ENTER KEY CONTINUES

USE F3 FOR MANUAL PULSE ENTRY
OTHER KEY TO RETURN TO SETUP

```

Use Screen To Align Pickup



Press ENTER

5

Actual Energy

Meter Energy

Meter Registration

Time of Test

Measured 3-Phase Power

Site Description

KH-HOUR MEASUREMENTS				
DESC: 84785025				
KH= 1.0000 FORM=				
PF= .9163	W-HR	VA-HR	VAR-HR	
ACTUAL: 5.002	5.459	2.185		
METER: 5.000	---	---		
%ACCUR: 99.96	---	---		
PREV1: ACTUAL= 9990	METER= 1.000			
PREV2: ACTUAL= 1.001	METER= 1.000			
PREV3: ACTUAL= 1.000	METER= 1.000			
ELAPSED=00:26.90 UARY= 0.11%				
PULSES EXPECTED : 5.002				
ACTUAL : 5				
LAST VOLT: 123.2	123.3	123.0		
LAST AMPS: 22.0	21.9	21.9		
LAST WATT: 2339.0	2149.6	216.0		
LAST VA: 2758.2	2758.9	2758.9		
LAST VAR: 97.2	97.1	98.1		
FILE=SUMS019 #508 POWERMATE 330 ANALYSIS				
84785025 SAVED ON 15-AUG-00 11:43:00				

Service Type

% Uncertainty in test
Due to Load Change

6

To Save, Press:



AND

