

Powermetrix 3302 Fan Assembly

Rev 1
Date: 12/10/2014

Created By:- Hussein Alami _____

Reviewed By:- Rick Ogan _____

Approved By:- Steve Hudson _____

Powermetrix 3302 Fan Assembly

Required Tools

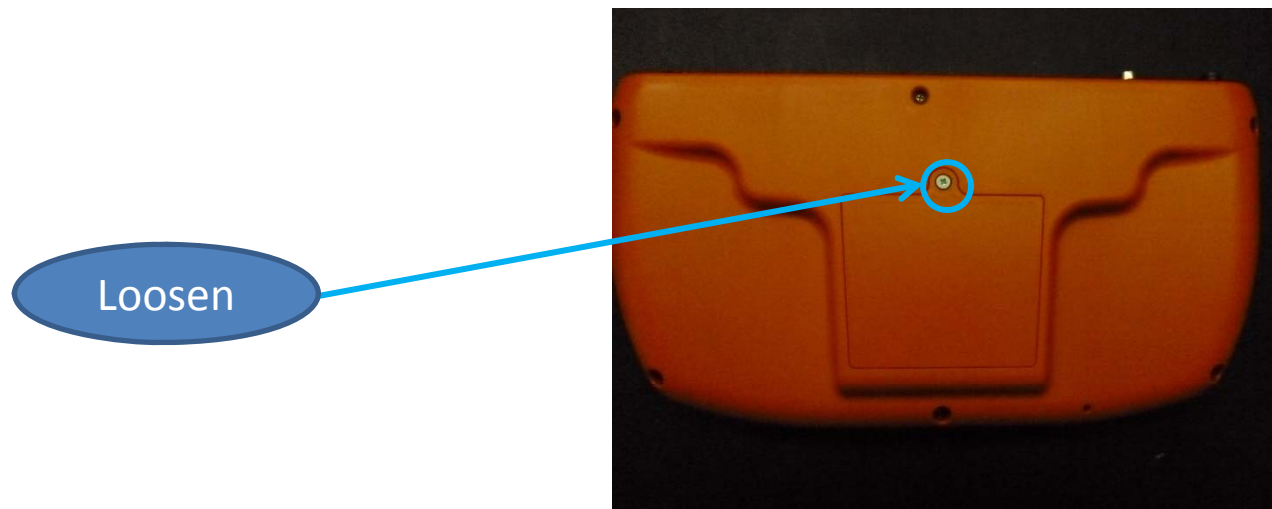


1/4" Nutdriver



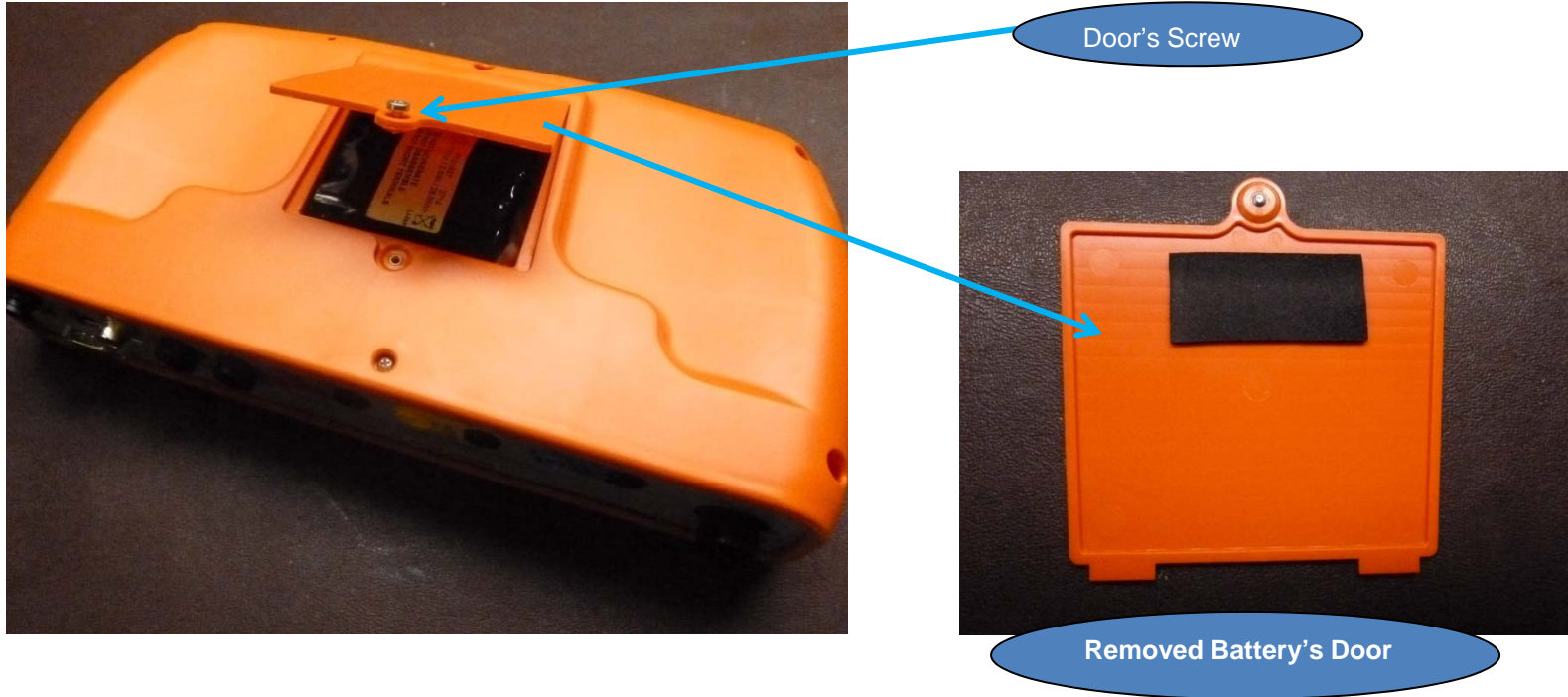
**#1 Phillips
Screwdriver**

Powermetrix 3302 Fan Assembly



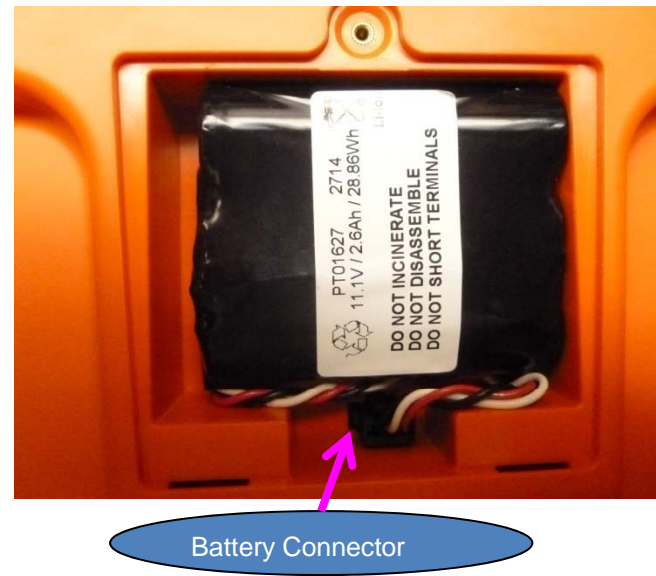
- 1) Using Phillips screw driver, loosen the Battery door that is located on the bottom of the unit

Powermetrix 3302 Fan Assembly



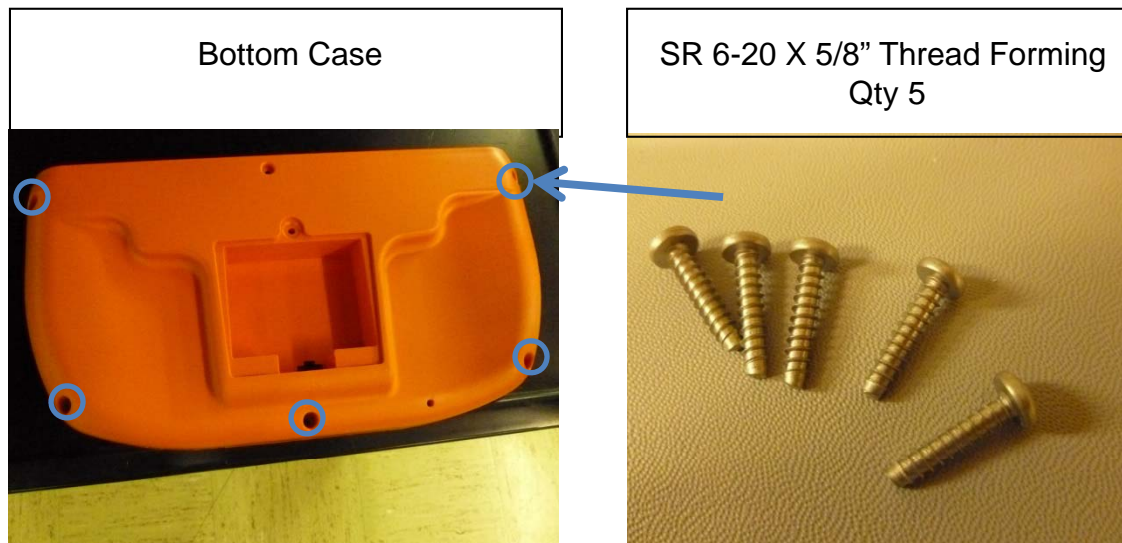
2) Lift & remove the Battery door and put it a side

Powermetrix 3302 Fan Assembly



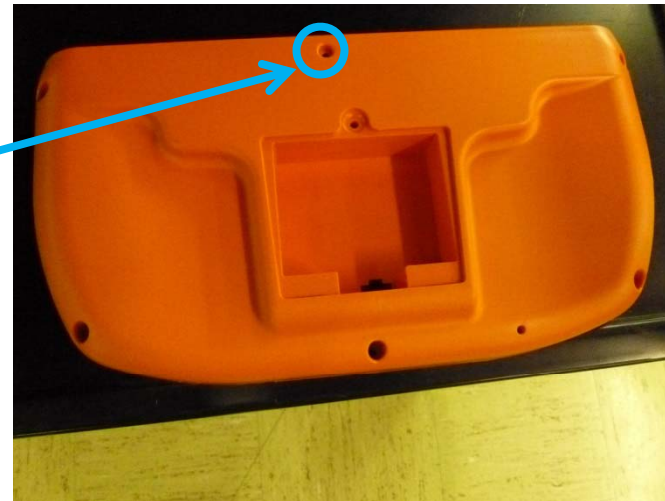
- 3) Disconnect the Battery connector and remove the battery from the battery housing

Powermetrix 3302 Fan Assembly



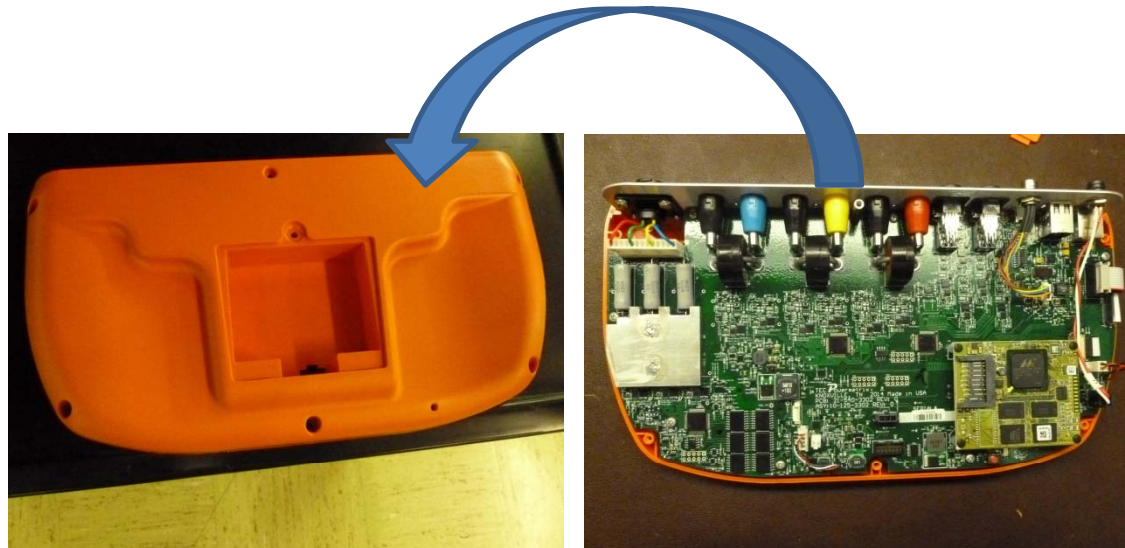
4) Using Phillips screwdriver, remove from the bottom section of the case five 6-20 Thread Forming screws

Powermetrix 3302 Fan Assembly



5) Using Phillips screwdriver, remove 4-40 X ¼" from the bottom case

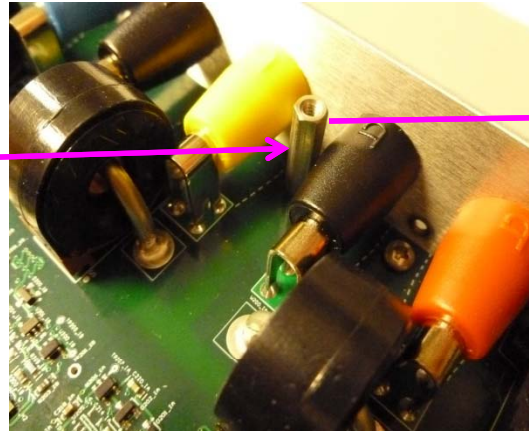
Powermetrix 3302 Fan Assembly



6) Lift the bottom section of the case away from the main assembly

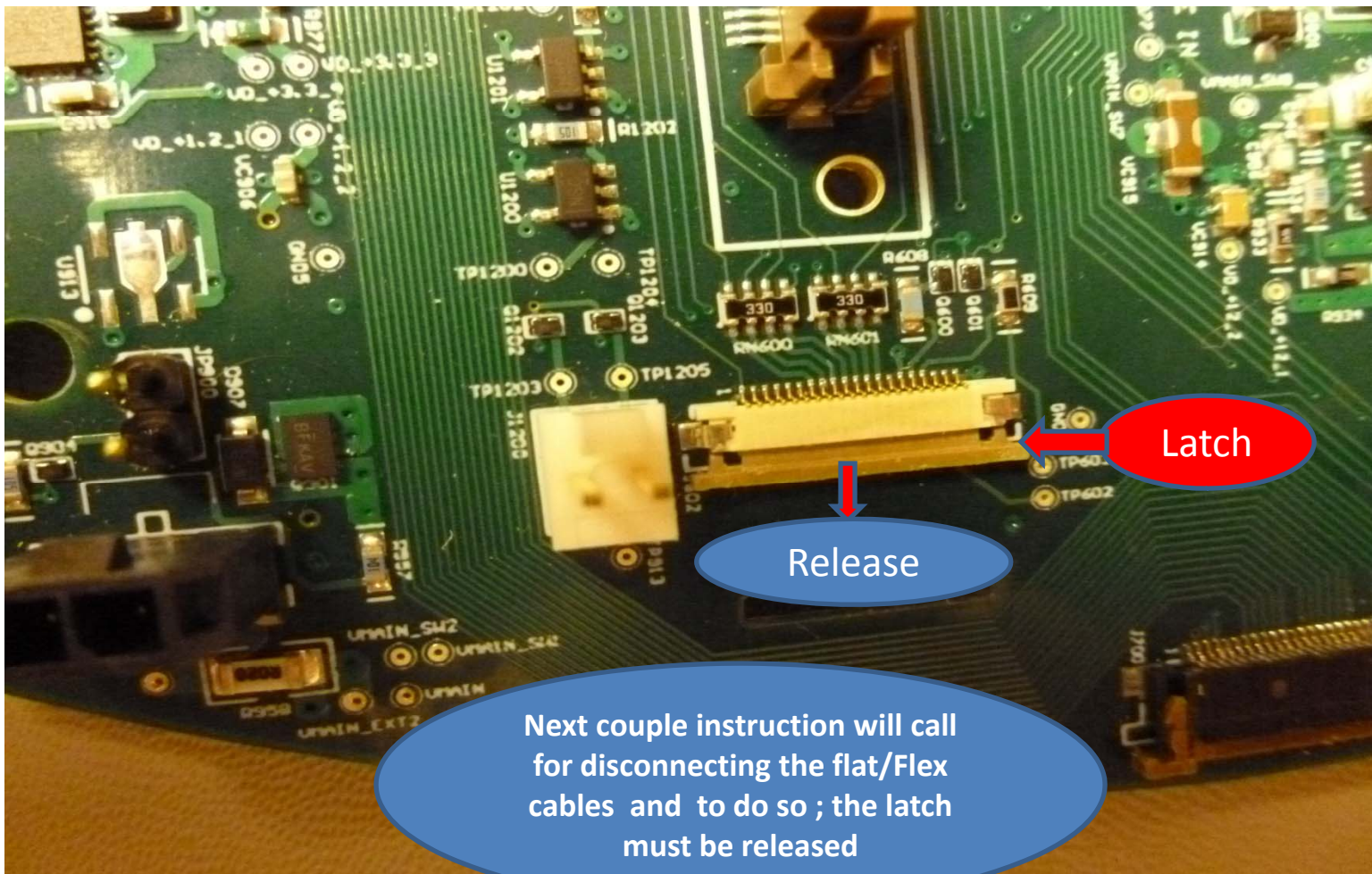
Powermetrix 3302 Fan Assembly

Standoff M/F 4-40 X. .75" X 3/8" Hex
, Qty 1

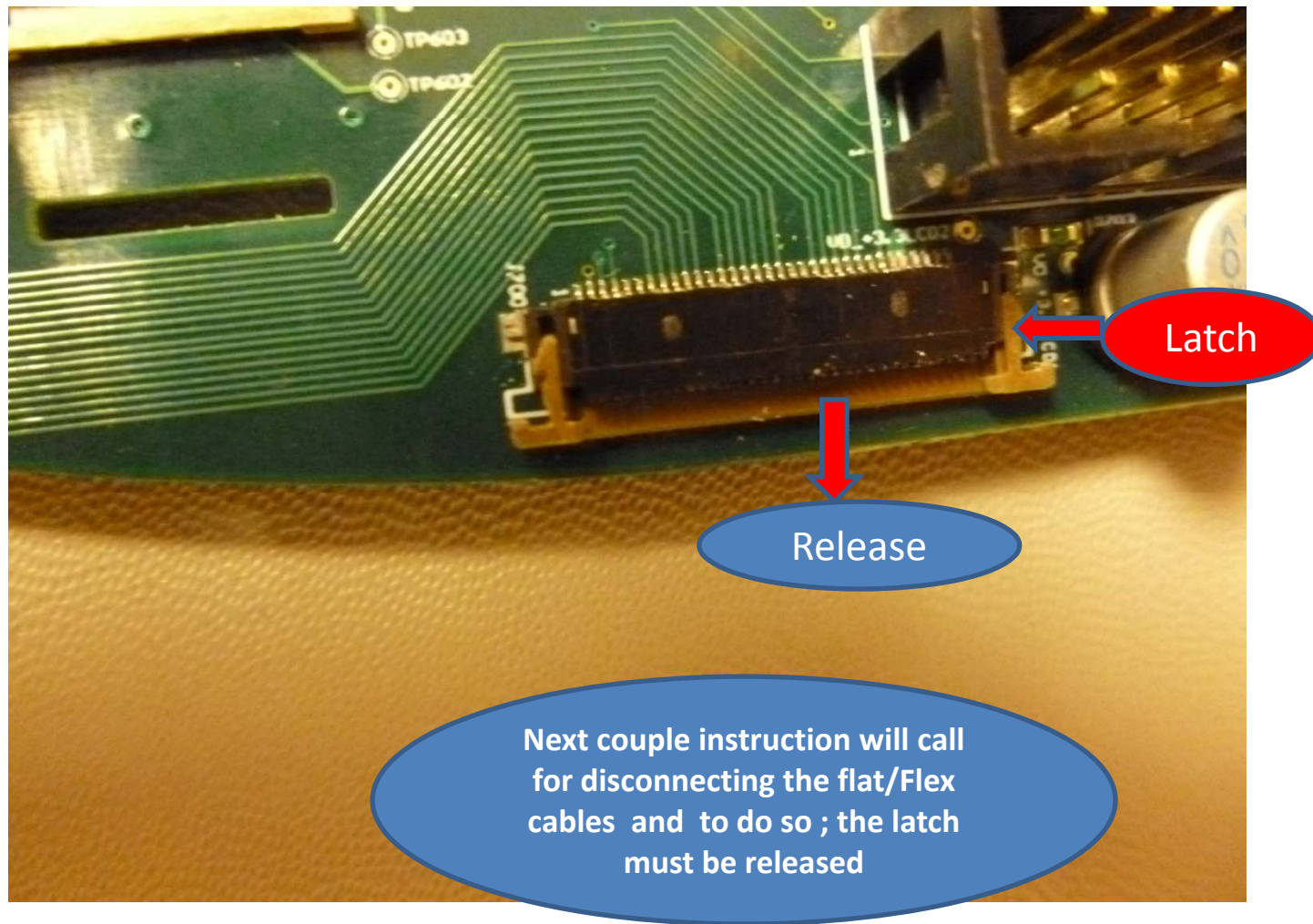


7) Using 1/4" Nutdriver, remove the Standoff Between the yellow and black jack

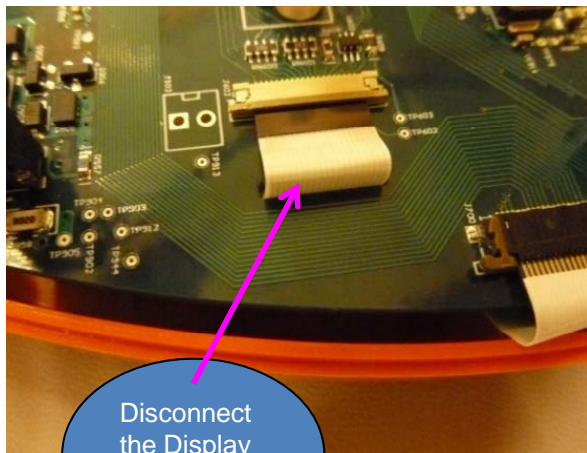
Powermetrix 3302 Fan Assembly



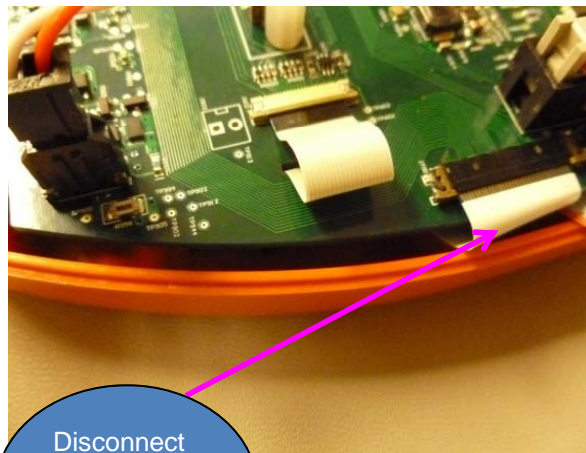
Powermetrix 3302 Fan Assembly



Powermetrix 3302 Fan Assembly



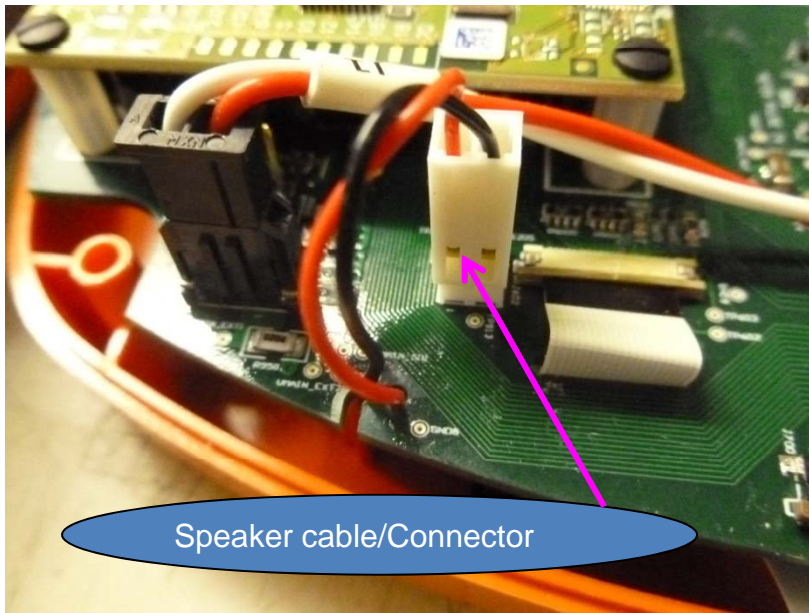
Disconnect
the Display
Flat Cable



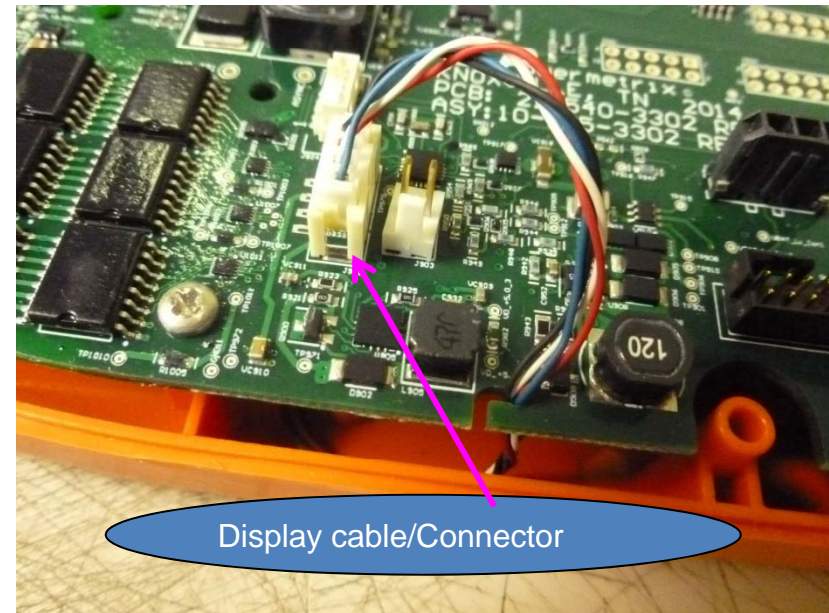
Disconnect
The Key
Pad Flat
Cable

- 8) Release latch & unplug the Display flat/flex cable that is connected to the Main Board Assembly
- 9) Release latch & unplug the Key Pad Flat Cable that is connected to the Main board assembly

Powermetrix 3302 Fan Assembly



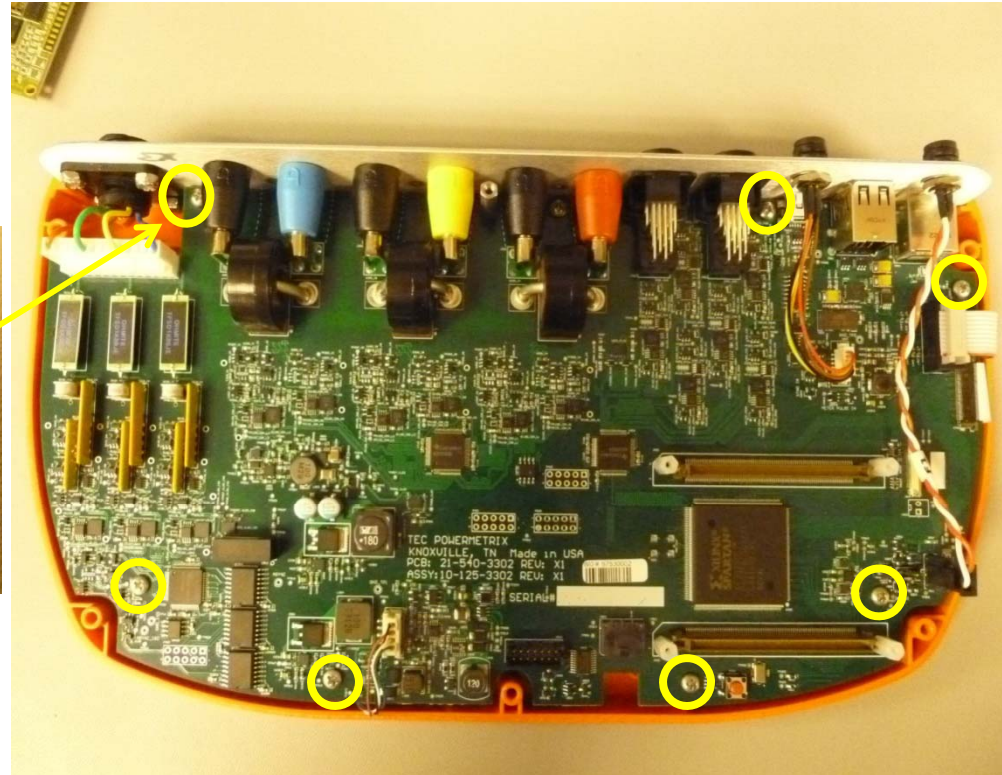
Speaker cable/Connector



Display cable/Connector

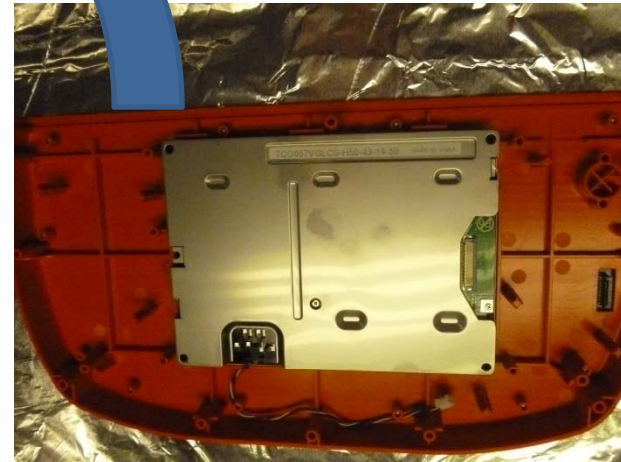
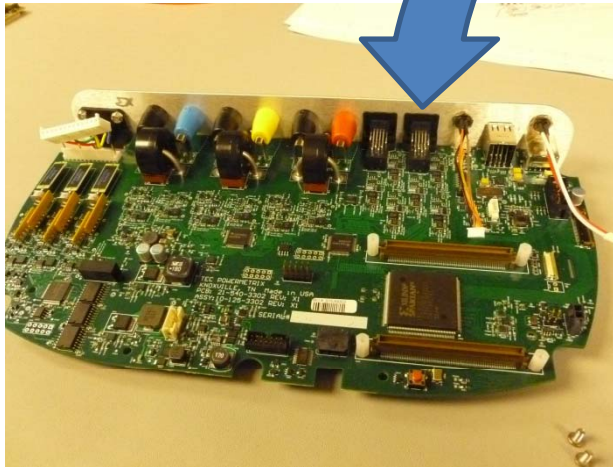
- 11) Un-Plug the speaker cable from the Main Board Assembly and free it from the board
- 12) Un-Plug the Display Power cable from the Main Board Assembly and free it from the board

Powermetrix 3302 Fan Assembly



13) Using Phillips screwdriver, remove the Main Board Assembly by removing 7 screws circled in yellow

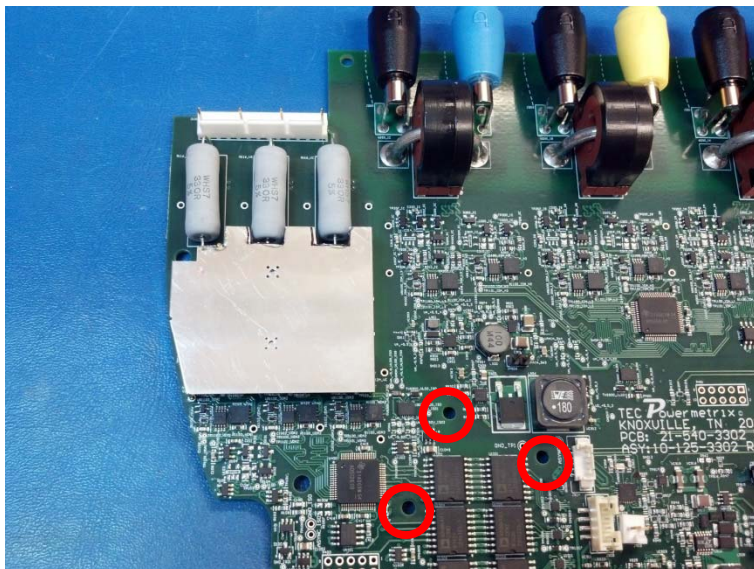
Powermetrix 3302 Fan Assembly



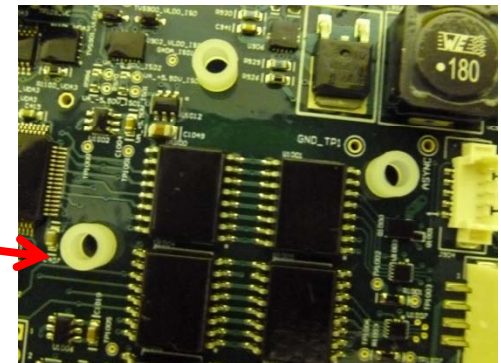
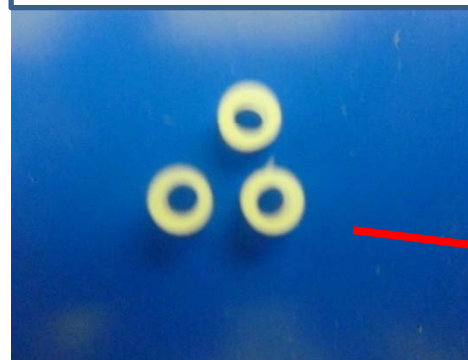
14) Separate the Main Board Assembly from the upper case

Powermetrix 3302 Fan Assembly

Installing the Fan on the Main Board

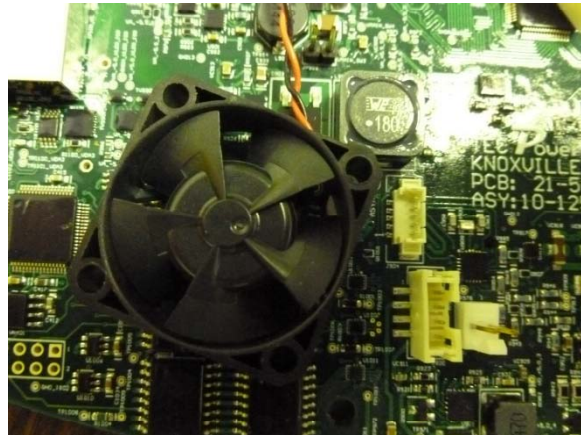


Nylon Spacer
P/N 30-420-0009
Qty 3

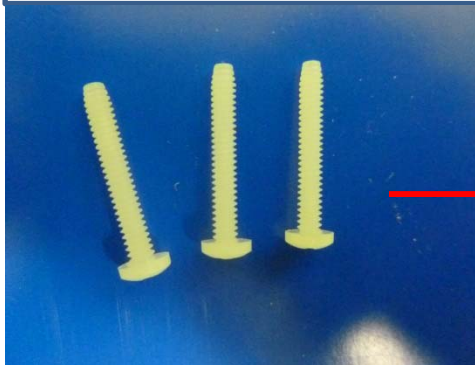


15) Position 3 nylon spacers in location as indicated above

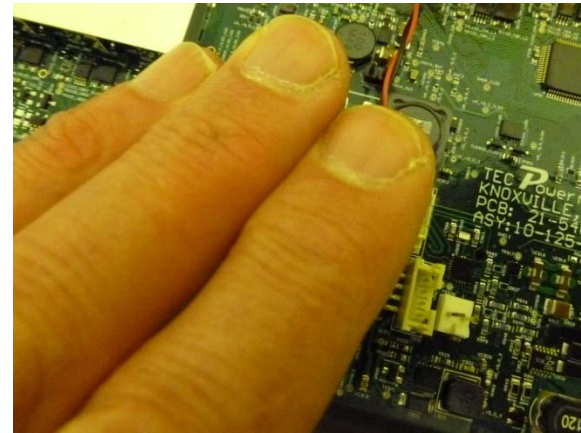
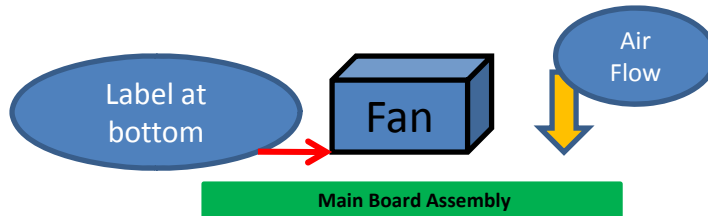
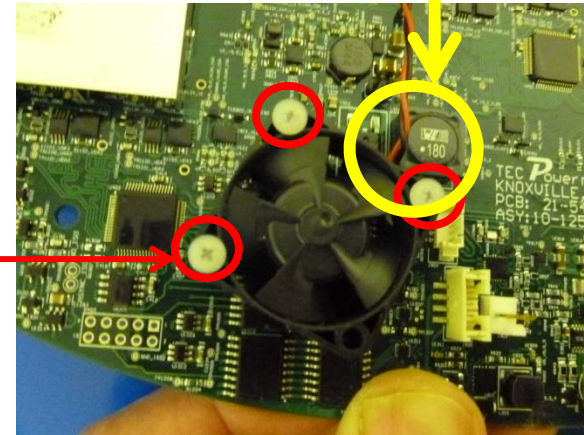
Powermetrix 3302 Fan Assembly



Nylon Screw 4-40 x 3/4"
P/N 30-130-1055
Qty 3

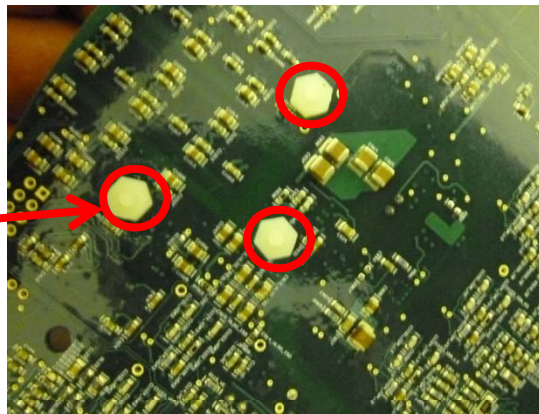


Fan Cable exit location
must be as shown in
photo



- 16) Align Fan over the Nylon Spacers; Air flow as above
- 17) Insert the Nylon screws into the Fan, Nylon Spacers through Main board
- 18) Place your hand over the three screws and keep under pressure

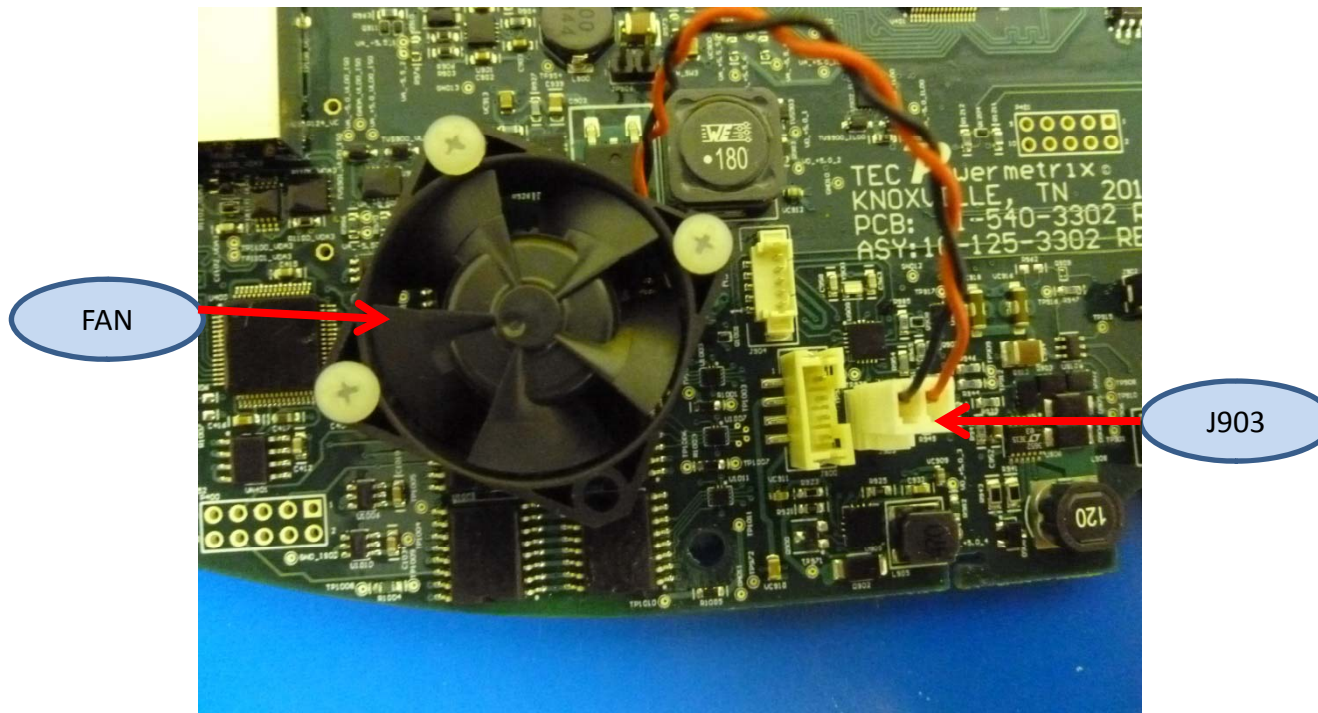
Powermetrix 3302 Fan Assembly



Back side of the
Main Board

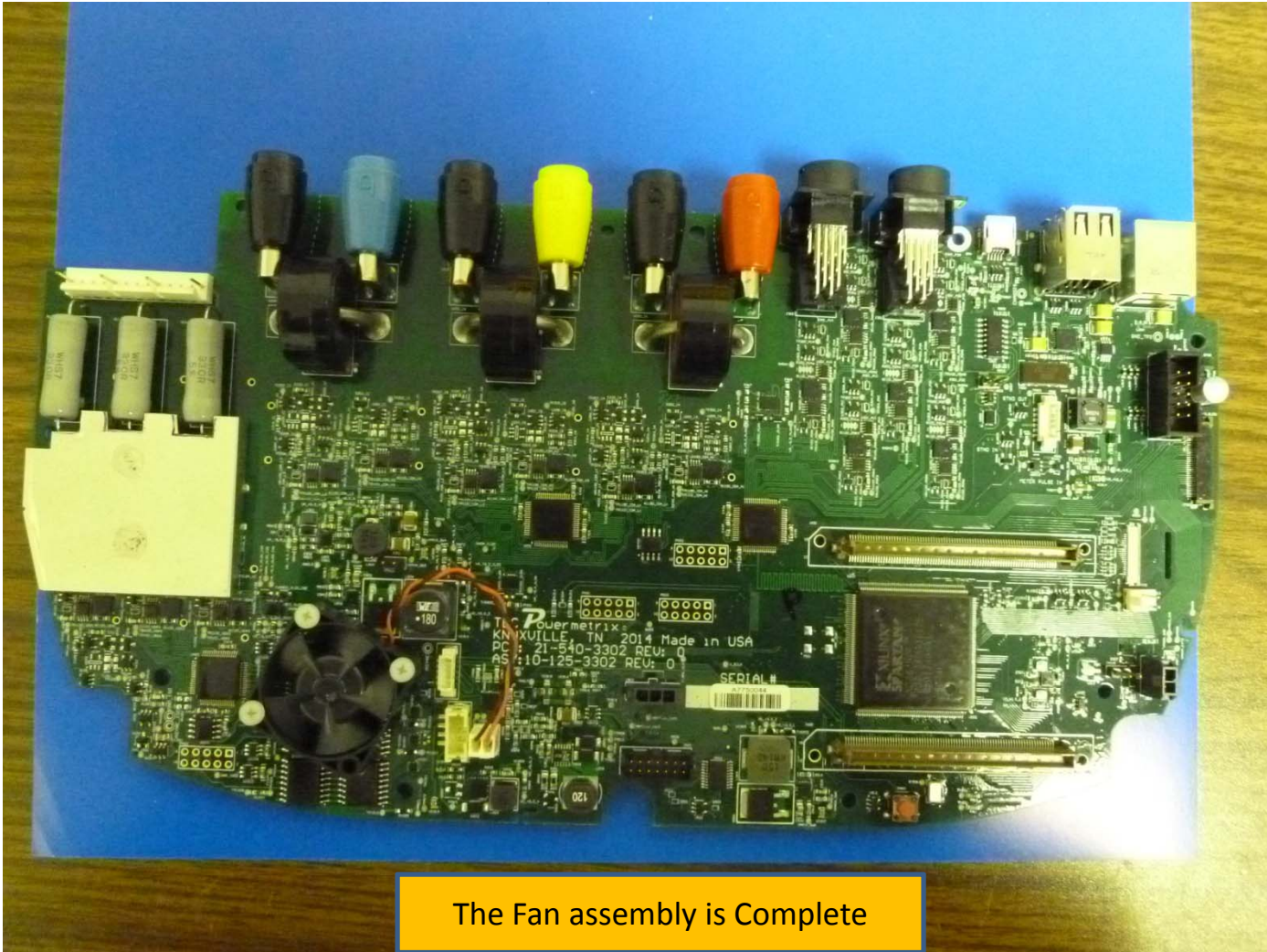
- 19) Turn the board upside down while maintaining pressure against the fan and the screws
- 20) Secure the Fan screws with Nylon Hex Nuts, Use ¼" Nutdriver to tighten

Powermetrix 3302 Fan Assembly



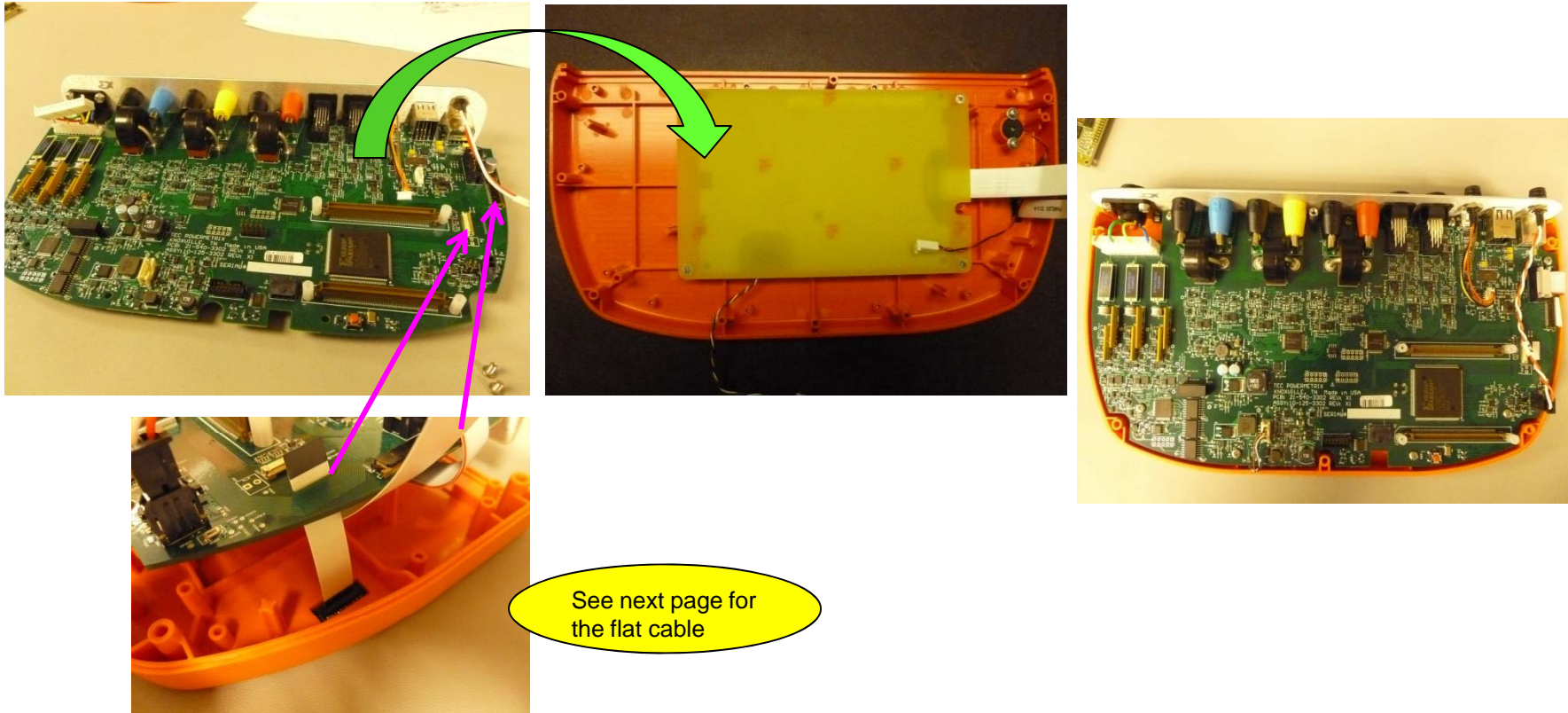
21) Plug the Fan Connector to J903

Powermetrix 3302 Fan Assembly



The Fan assembly is Complete

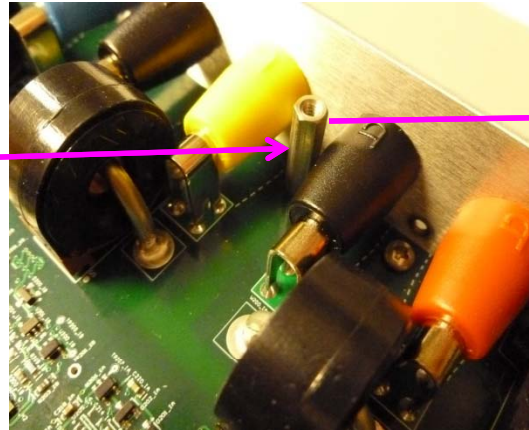
Powermetrix 3302 Fan Assembly



22) Re- Join P. C. Board assembly with Sub assembly 3 Series Front Panel and rout the two Flat ribbon connector through the board

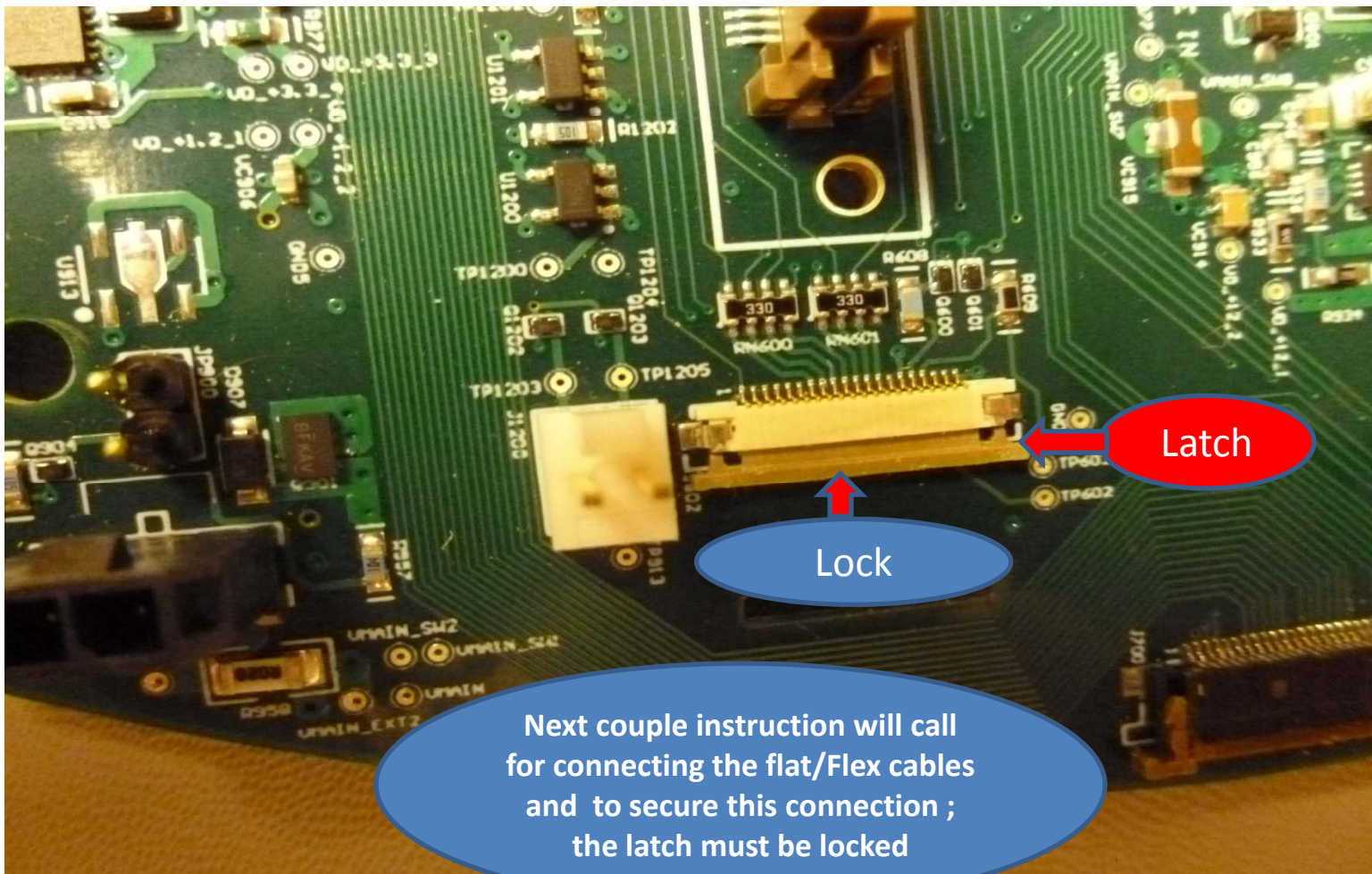
Powermetrix 3302 Fan Assembly

Standoff M/F 4-40 X. .75" X 3/8" Hex
, Qty 1

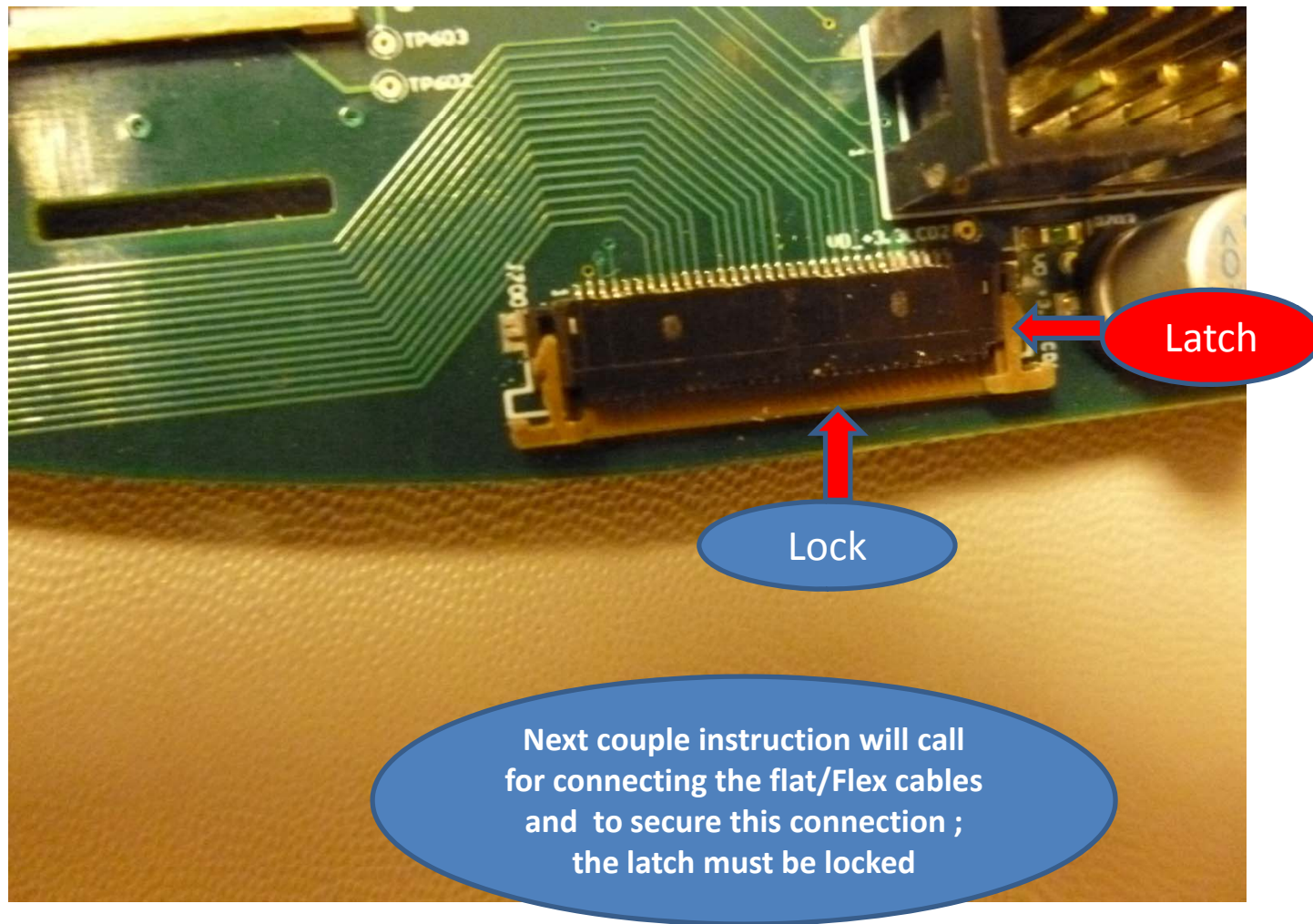


23) Using 1/4" Nutdriver, re-install the Standoff Between the yellow and black jack

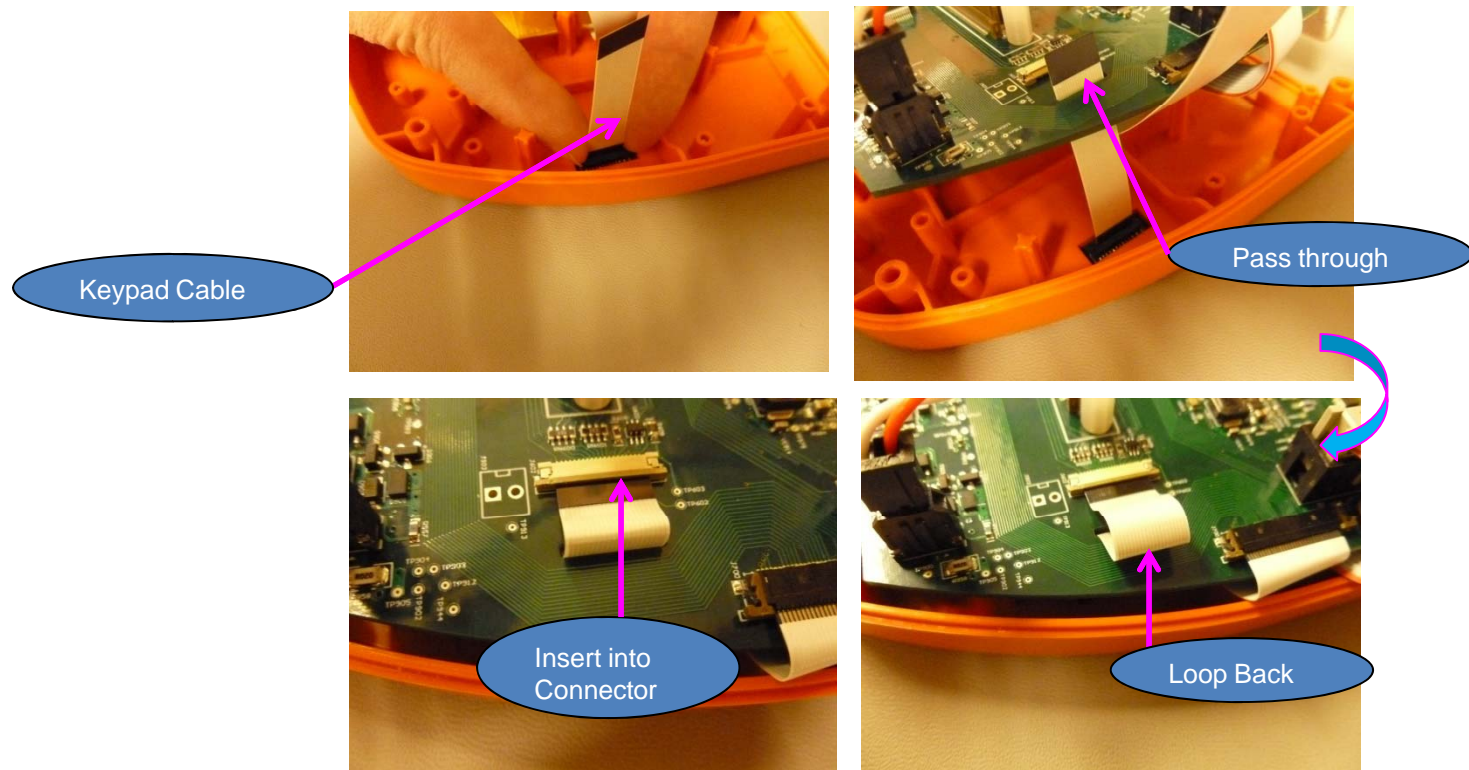
Powermetrix 3302 Fan Assembly



Powermetrix 3302 Fan Assembly

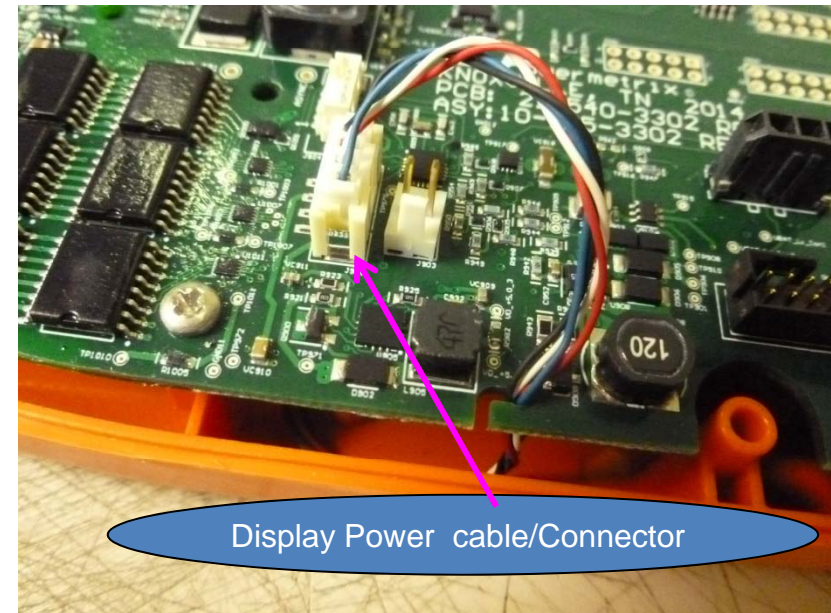
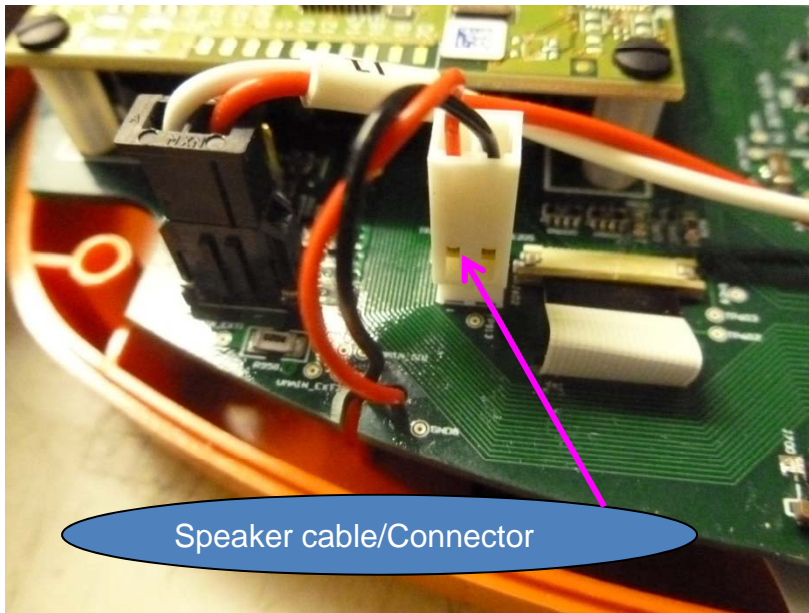


Powermetrix 3302 Fan Assembly



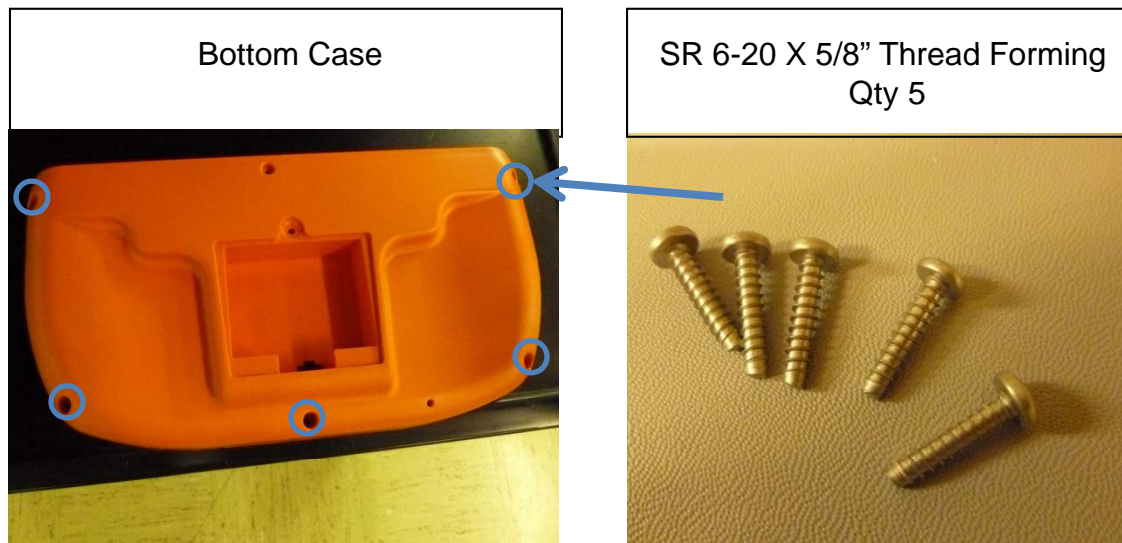
- 24) Plug in the Keypad flat cable into the black connector that resides on the front half of the case, lock latch
25) Pass the Keypad Cable through the PCB assembly and loop back so that the connections on the tip of the cable are parallel to the Board, lock latch
26) Insert the Keypad flat cable into the connector as shown above.

Powermetrix 3302 Fan Assembly



- 27) Plug in the Main Board Assembly the Speaker cable
- 28) Plug in the Main Board Assembly the Display Power cable

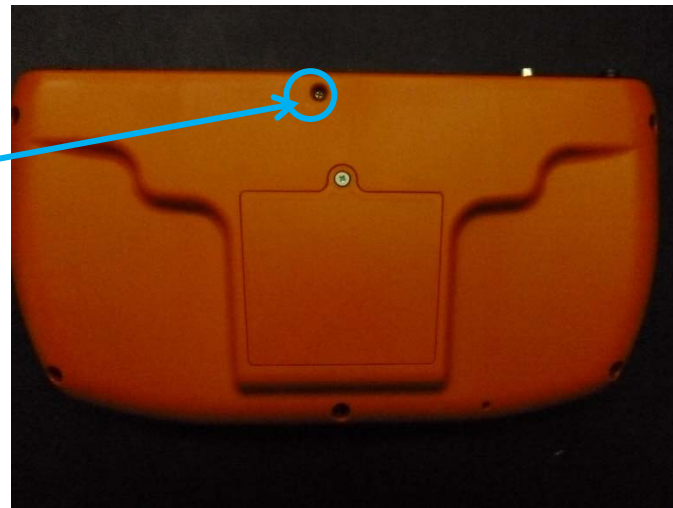
Powermetrix 3302 Fan Assembly



29) Using Phillips screwdriver, secure the bottom section of the case using five 6-20 Thread Forming screws

Powermetrix 3302 Fan Assembly

SR 4-40 X ¼" Pan Head
P/N 30-130-0251, Qty 1



30) Using Phillips screwdriver, re-install 4-40 X ¼" to the case

Powermetrix 3302 Fan Assembly

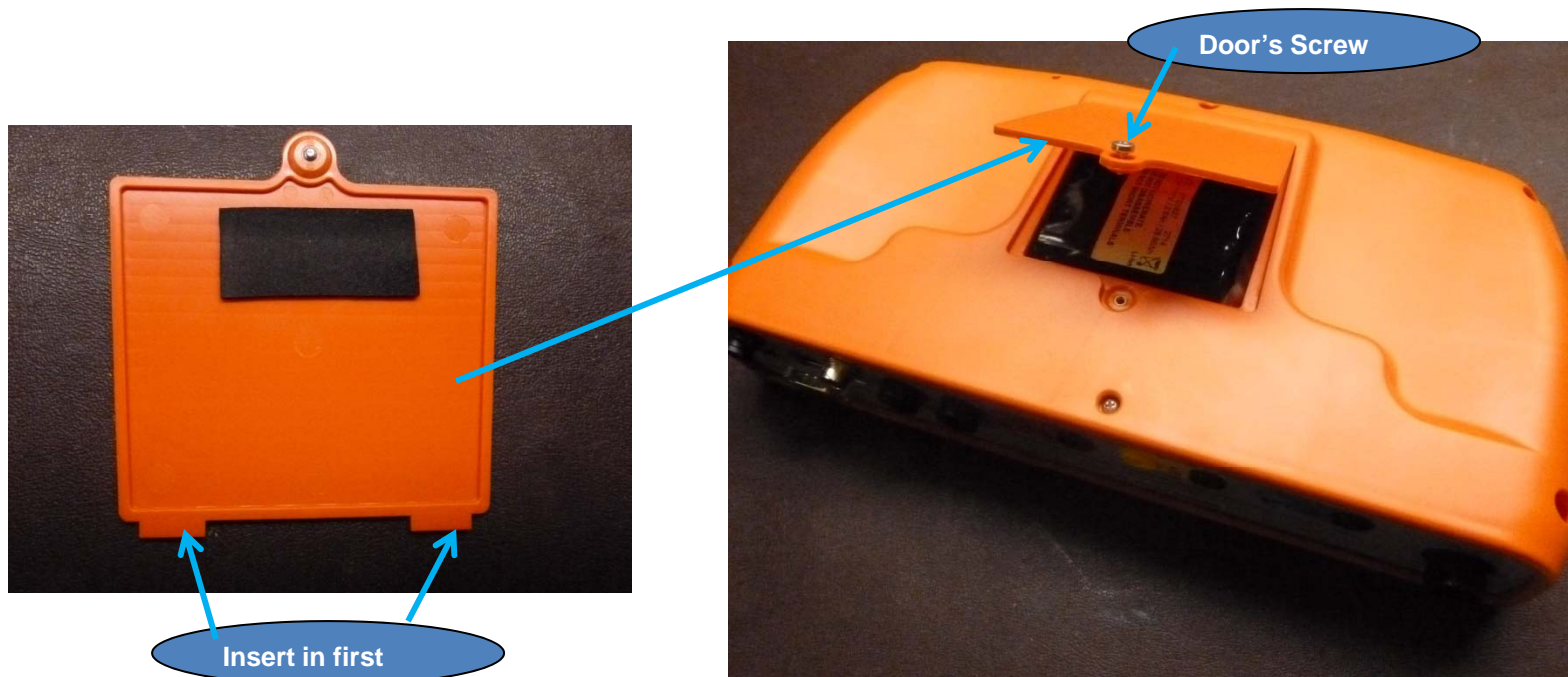
Battery 2600 mAh
PN 29-100-1627, Qty 1



Battery Connector

31) Plug in the Battery connector and place the battery in the battery housing as shown above

Powermetrix 3302 Fan Assembly



32) Install the Battery's door and tighten the door's screw, use Phillips screwdriver.