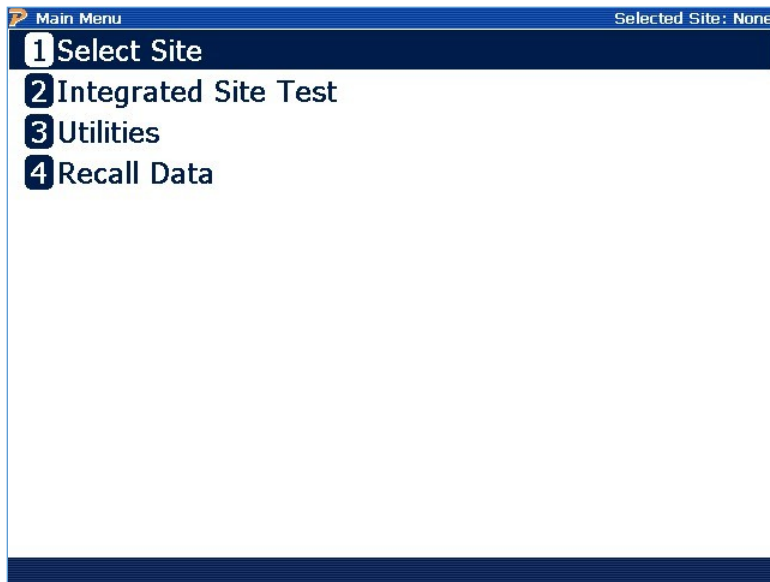


Accessory Start-up Guide

To begin using your new accessory, please follow the below steps.

3302

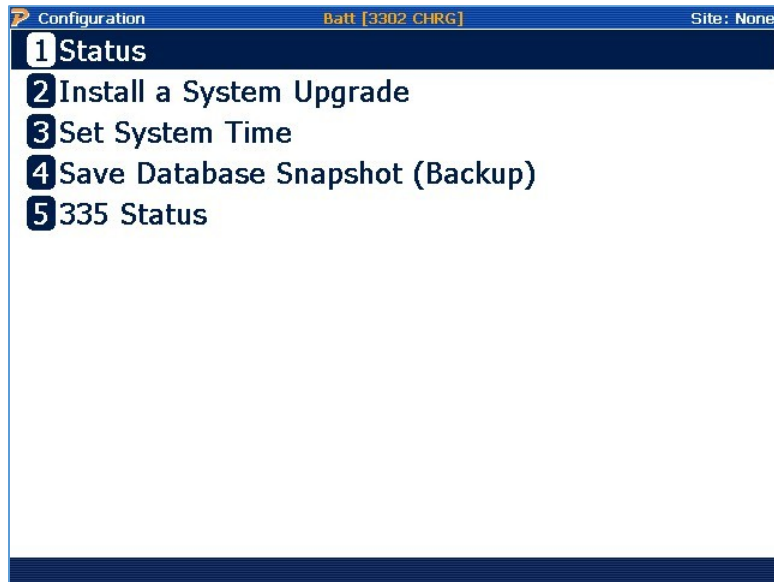
1. Browse to www.powermetrix.com and login through the support login.
2. Browse to the technical library and download the firmware for the 3302.
 - a. <http://www.powermetrix.com/technical-library/>
3. Save the file to your desktop.
4. Right click and unzip the downloaded file.
5. Copy the file to an usb drive.
6. Insert the usb drive into the 3 series
7. Power on the 3 series, connect the power supply to AC power.
8. Select option 3, Utilities.



9. Depending on your version of firmware, either press 4 “install System upgrade” or press 6 for System.

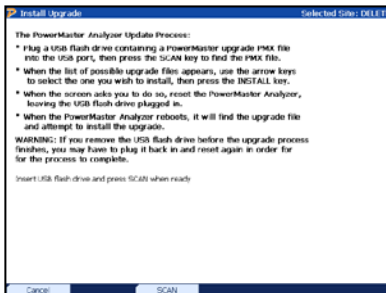


10. If you pressed 6 for system, press 2 “Install system upgrade”, otherwise proceed to step 11.



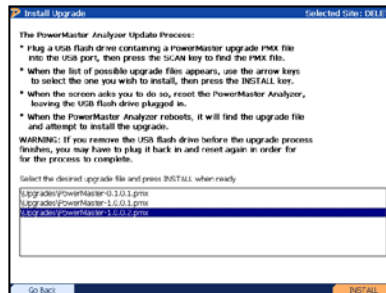
11. The following steps show the user how to update the PowerMaster® in the field:

STEP 1



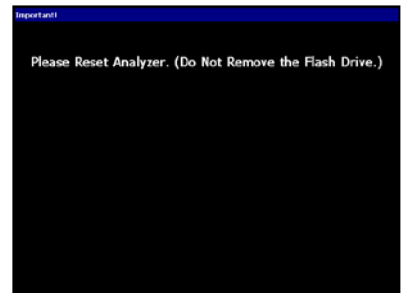
Insert USB Flash drive into a USB peripheral and press F3 to scan. Verify unit is plugged into AC Power.

STEP 2



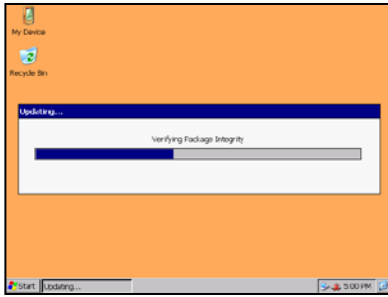
Select the .PMX upgrade file and press F6 to install

STEP 3



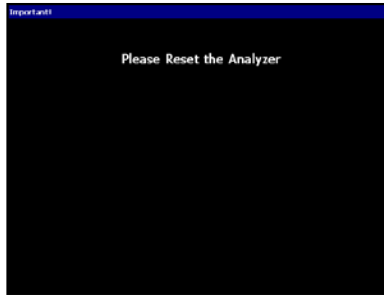
After recognition, reset the PowerMaster® by turning off then turning back on

STEP 4



After power up, the PowerMaster® will run the update application automatically (this may take several minutes)

STEP 5



After installation, reset the PowerMaster® by turning off then turning back on

Connecting the Accessory Box.

Connections

Below is a picture of the 335 installed under a 3 series, disconnected.



Connect the current jumpers as shown below, verify that the colors on the banana jacks match, and that the safety screw is firmly tightened.

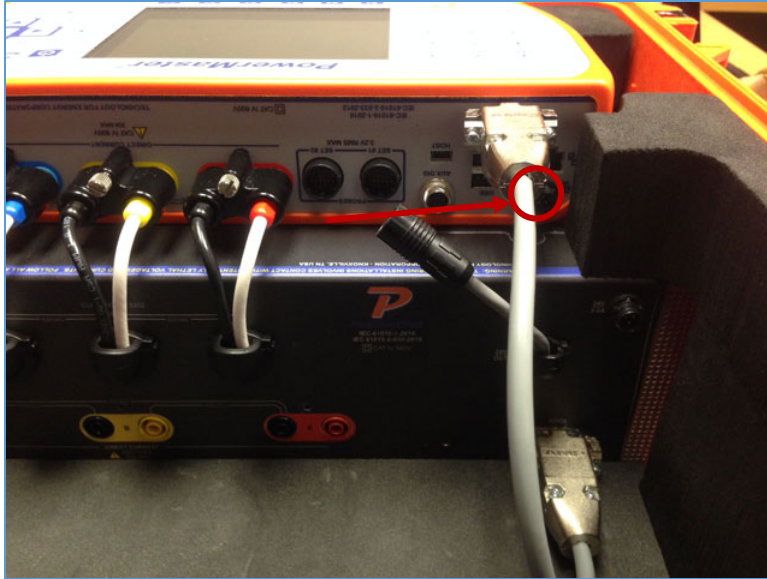


Warning!!! If these connections are not made, and the duckbills are inserted into a test switch, you will open the secondary of the test switch!!!

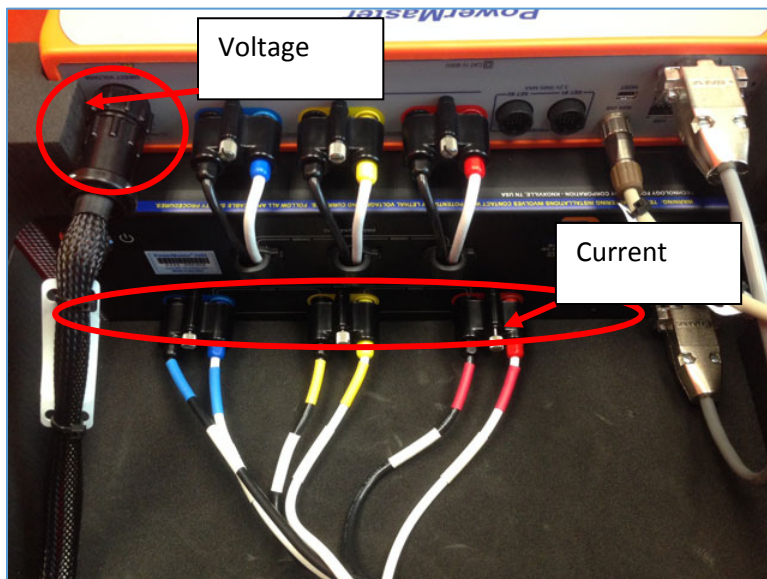
Connect the communication cable next from the 335 to the 3 series.



Finally, connect the battery jumper from the 335 to the 3 series.



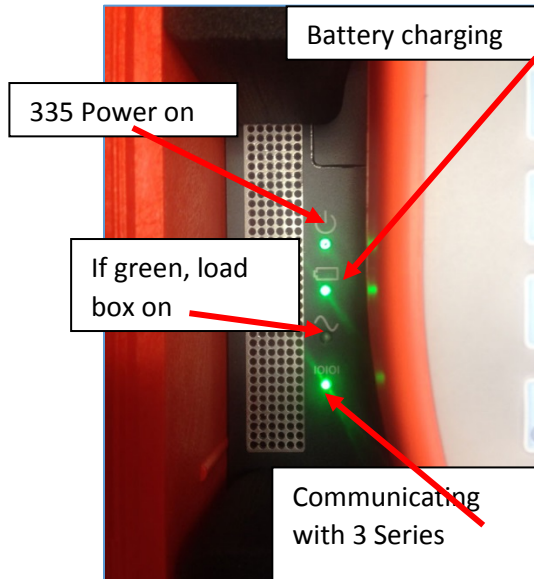
Before testing, connect the duckbills to the 335 and connect the voltage probe to the 3 Series as shown below.



To power up the unit, press the button on the 335, then turn on the 3 series. If the 335 is not powered on, data acquisition will be incorrect.



Shown below are the LED's on top of the 335, plus explanations.



Support

If you need further support please don't hesitate to contact:

Ray Gore

Product & Technical Support

PH: 865-218-5888

Cell: 865-414-3562

Email: Ray.Gore@tec-usa.com

Eric Hubbard

Product Manager

Office: 865-218-5898

Cell: 865-296-0585

Email: Eric.Hubbard@tec-usa.com